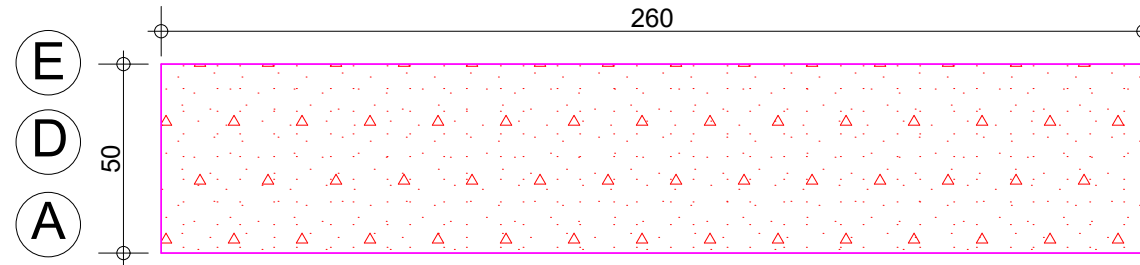
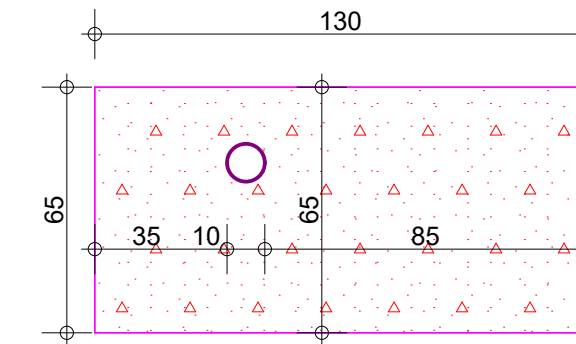
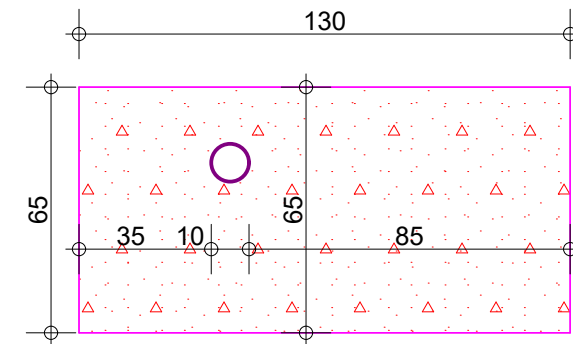
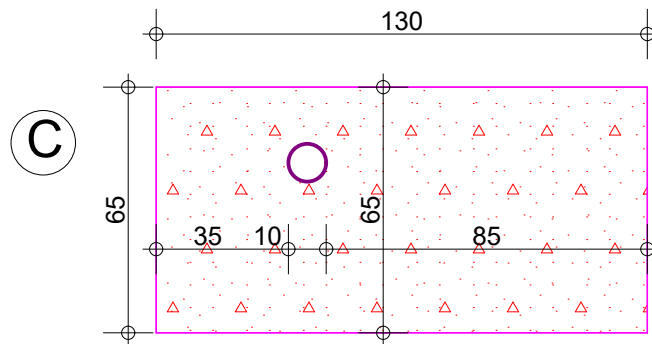
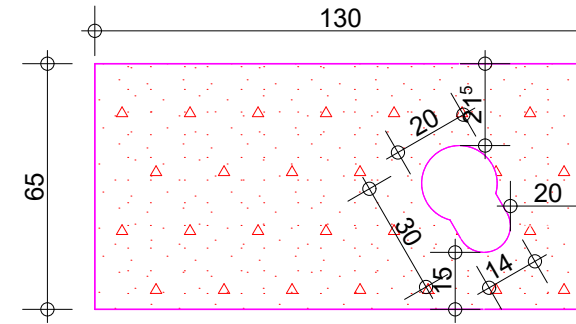
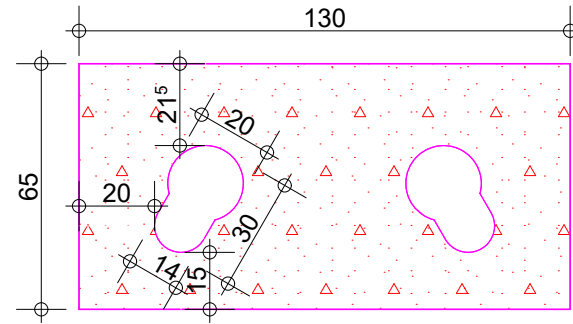


Diagram illustrating a rectangular field with dimensions 130 (width) and 50 (height). The field is divided into three horizontal sections labeled E, D, and A from top to bottom. The field is filled with a pattern of red dots and red triangles.



Technical drawing of a rectangular plate with a central hole. The plate has overall dimensions of 130 (width) and 65 (height). The central hole is an irregular shape with a minimum width of 20 and a maximum width of 30. The hole is positioned such that its left side is 20 from the left edge, its top is 21.5 from the top edge, and its bottom is 15 from the bottom edge. The hole's right side is 20 from the right edge. The plate is filled with a pattern of small red triangles. A circular feature labeled 'B' is located on the left side of the plate.



Technical drawing of a rectangular plate with dimensions 130x50. The plate features three rows of holes, labeled E, D, and A from top to bottom. Row E contains three holes with a diameter of 6mm and a pitch of 12cm. Row D contains three holes with a diameter of 10mm and a pitch of 12cm. Row A contains three holes with a diameter of 10mm and a pitch of 12cm. The holes are arranged in a grid pattern.

Technical drawing of a rectangular table with dimensions 130x65. The table has a grid of 3x3 squares. The top edge is labeled "Lit de Ø6, esp: 12cm" and the bottom edge is labeled "Lit de Ø10, esp: 12cm". The left edge is labeled "B" and "C" in circles.

Technical drawing of a rectangular plate with dimensions 260x50. The plate features three horizontal slots labeled A, D, and E. The slots are defined by vertical lines and horizontal lines. The top slot is labeled "Lit de Ø6, esp: 12cm" and the bottom slot is labeled "Lit de Ø10, esp: 12cm". The plate is shown with a pink border.

Technical drawing of a rectangular plate with dimensions 260x65. The plate has a pink border. On the left side, there are three circular holes labeled B and C. The plate contains three horizontal lines and three vertical lines. The horizontal lines are labeled "Lit de Ø10, esp: 12cm" and the vertical lines are labeled "Lit de Ø6, esp: 12cm".



**Enabel** 

**CENTRE D'ENSEIGNEMENT DE METIERS DE BUBANZA**

[illegible]

D 007.3